

Rolla Regional Economic Commission

Missouri S&T Master Plan update – 2018



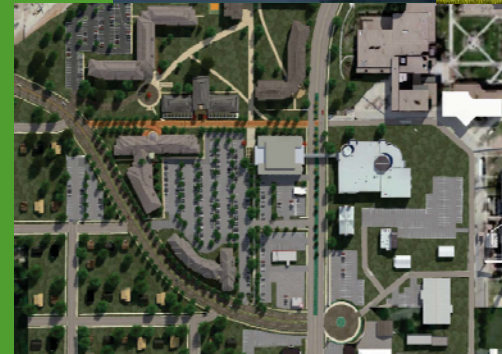
Ted Ruth
Assistant Vice Chancellor Facilities Services

MISSOURI
S&T

What is happening with S&T's plan?

Plan Drivers

- > Improve safety along Bishop Avenue (Hwy. 63) and University Drive
- > Define campus arrival district
- > Renovate and right-size facilities to improve utilization
- > Enhance Library district
- > Enhance Residential/mixed-use district

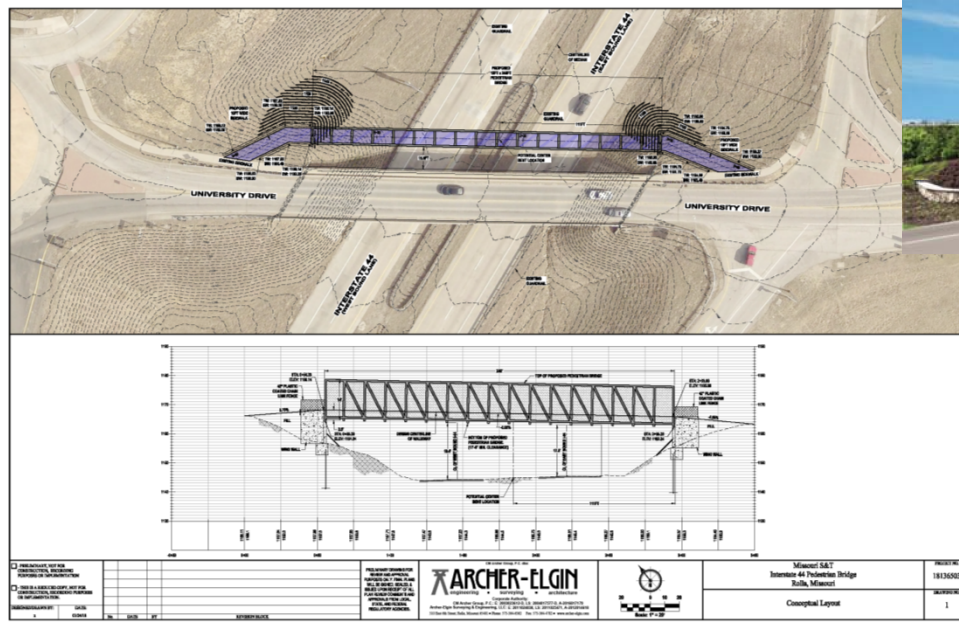


MISSOURI
S&T

What is happening with S&T's plan?

Plan Drivers

- > Improve safety
 - I-44 pedestrian bridge
 - Connection to property north of I-44
 - Inadequate safe passage



MISSOURI
S&T

What is happening with S&T's plan?

Plan Drivers

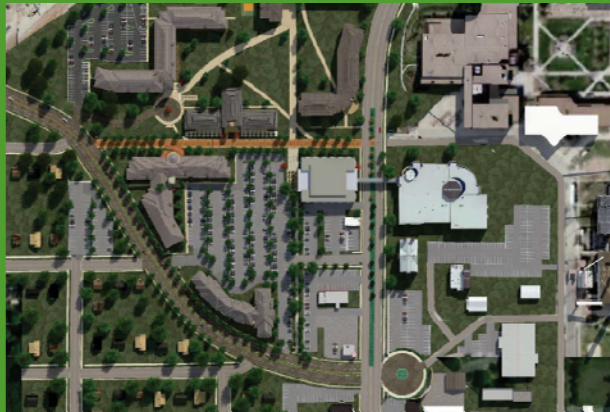
- > Improve safety and enhance aesthetics



What is happening with S&T's plan?

Plan Drivers

- > Improve safety along Bishop Avenue (Hwy 63) and University Drive
 - Improve/control crossings
 - Define campus entry
 - Calm traffic flow



MISSOURI
S&T

What is happening with S&T's plan?

Plan Drivers

- > Define Campus Arrival District



What is happening with S&T's plan?

Plan Drivers

- > Define Campus Arrival District



What is happening with S&T's plan?

Plan Drivers

- > Define Campus Arrival District



What is happening with S&T's plan?

Plan Drivers

- > Define Campus Arrival District



MISSOURI
S&T

What is happening with S&T's plan?

Plan Drivers

- > Renovate and right-size facilities to improve utilization
 - Schrenk Hall – Phase 2A (Chemistry and Biological Sciences)
 - 42,000 GSF impacted, \$7.3M Project Budget



MISSOURI
S&T

What is happening with S&T's plan?

Plan Drivers

- > Renovate and right-size facilities to improve utilization
 - Advanced Construction Materials Lab (addition to Civil Engineering Building)
 - 18,000 GSF added, \$6.5M Project Budget

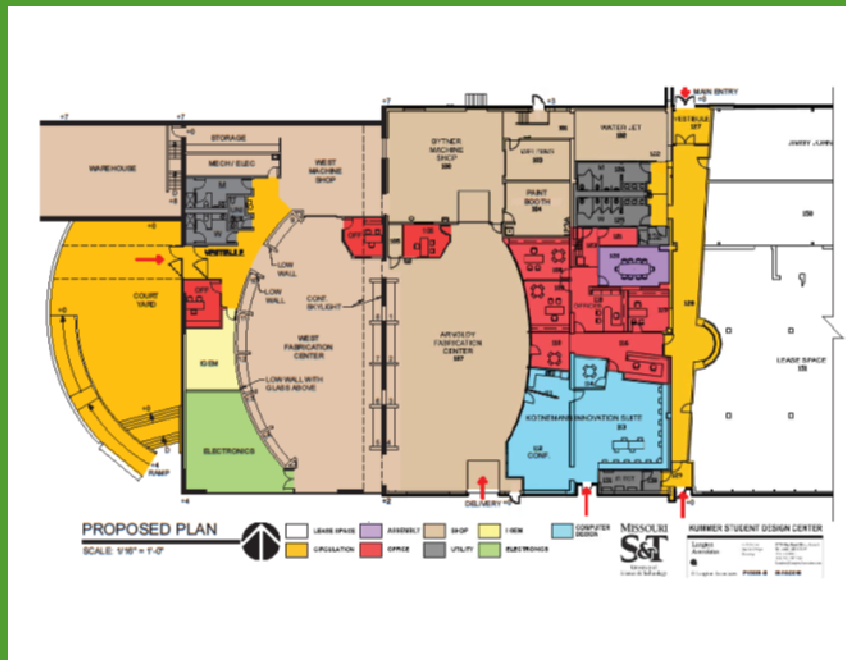


MISSOURI
S&T

What is happening with S&T's plan?

Plan Drivers

- > Renovate and right-size facilities to improve utilization
 - Student Design Center Addition
 - 8,000 GSF added, \$2.9M Project Budget



MISSOURI
S&T

What is happening with S&T's plan?

Plan Drivers

- > Renovate and right-size facilities to improve utilization
 - Fitness Center Expansion and Arena Renovation
 - 37,900 GSF impacted (10,000 new), \$6.3M Project Budget

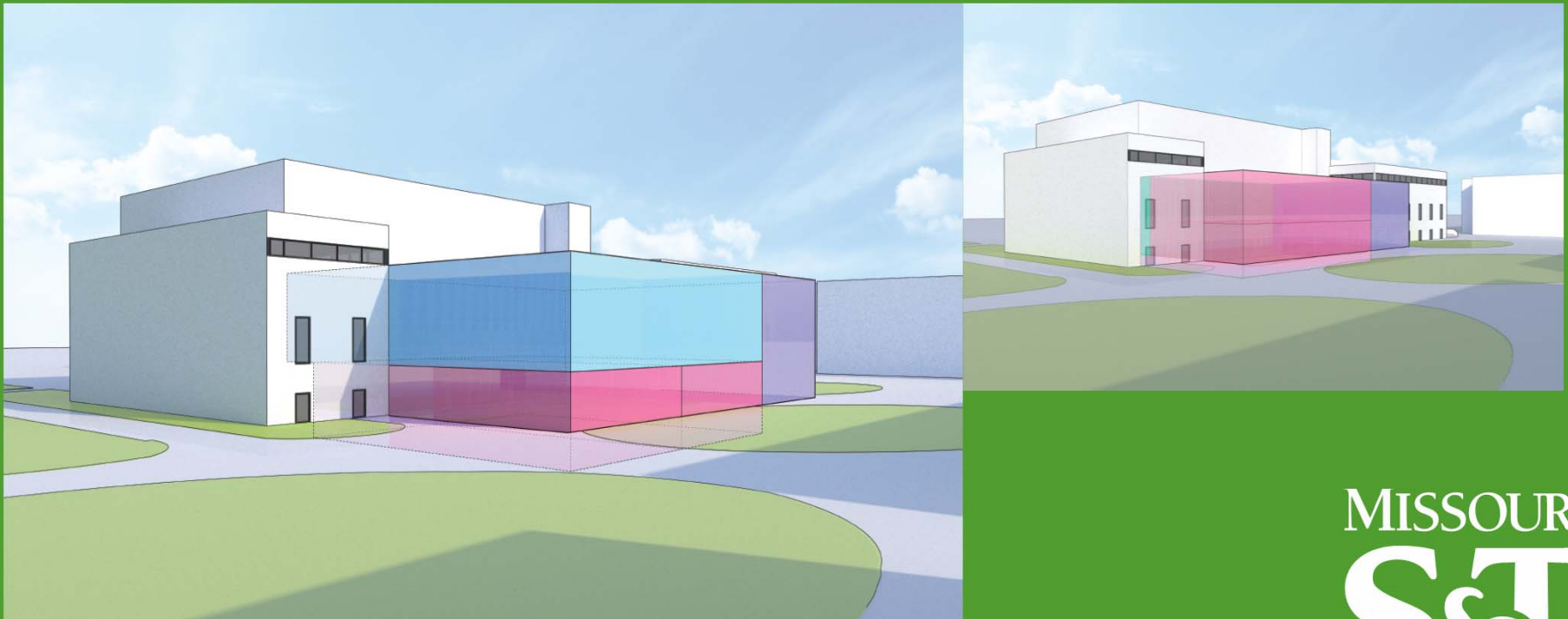


MISSOURI
S&T

What is happening with S&T's plan?

Plan Drivers

- > Renovate and right-size facilities to improve utilization
 - Student Classroom/Learning Center Addition
 - 18,000 GSF impacted, \$5.3M Project budget



What is happening with S&T's plan?

Plan Drivers

- > Enhance Library District
 - Library/Learning Commons Renovation
 - 92,000 GSF impacted, \$10M Project Budget (phased)

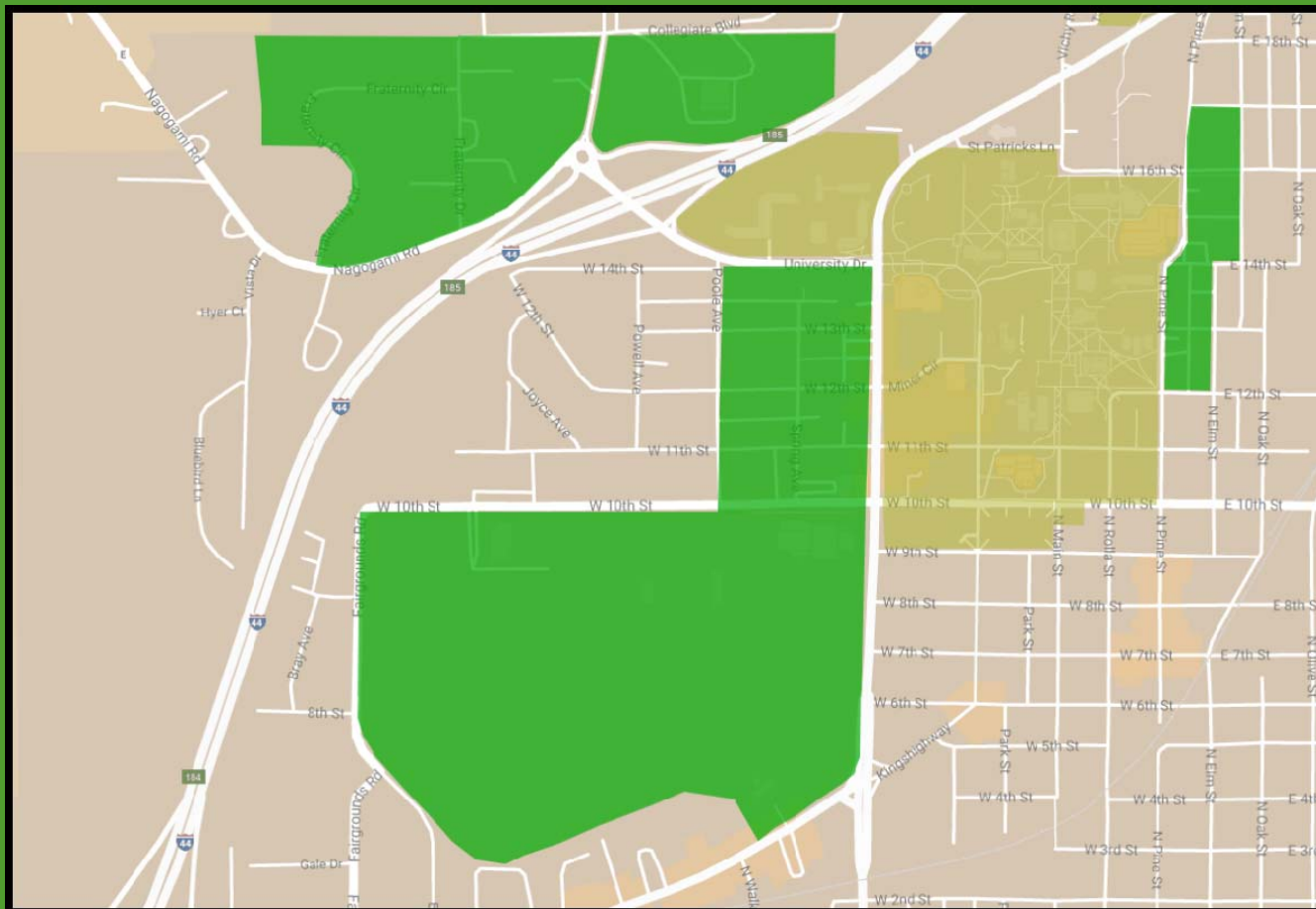


MISSOURI
S&T

What is happening with S&T's plan?

Plan Drivers

- > Enhance Residential/Mixed-Use District



MISSOURI
S&T

Questions?