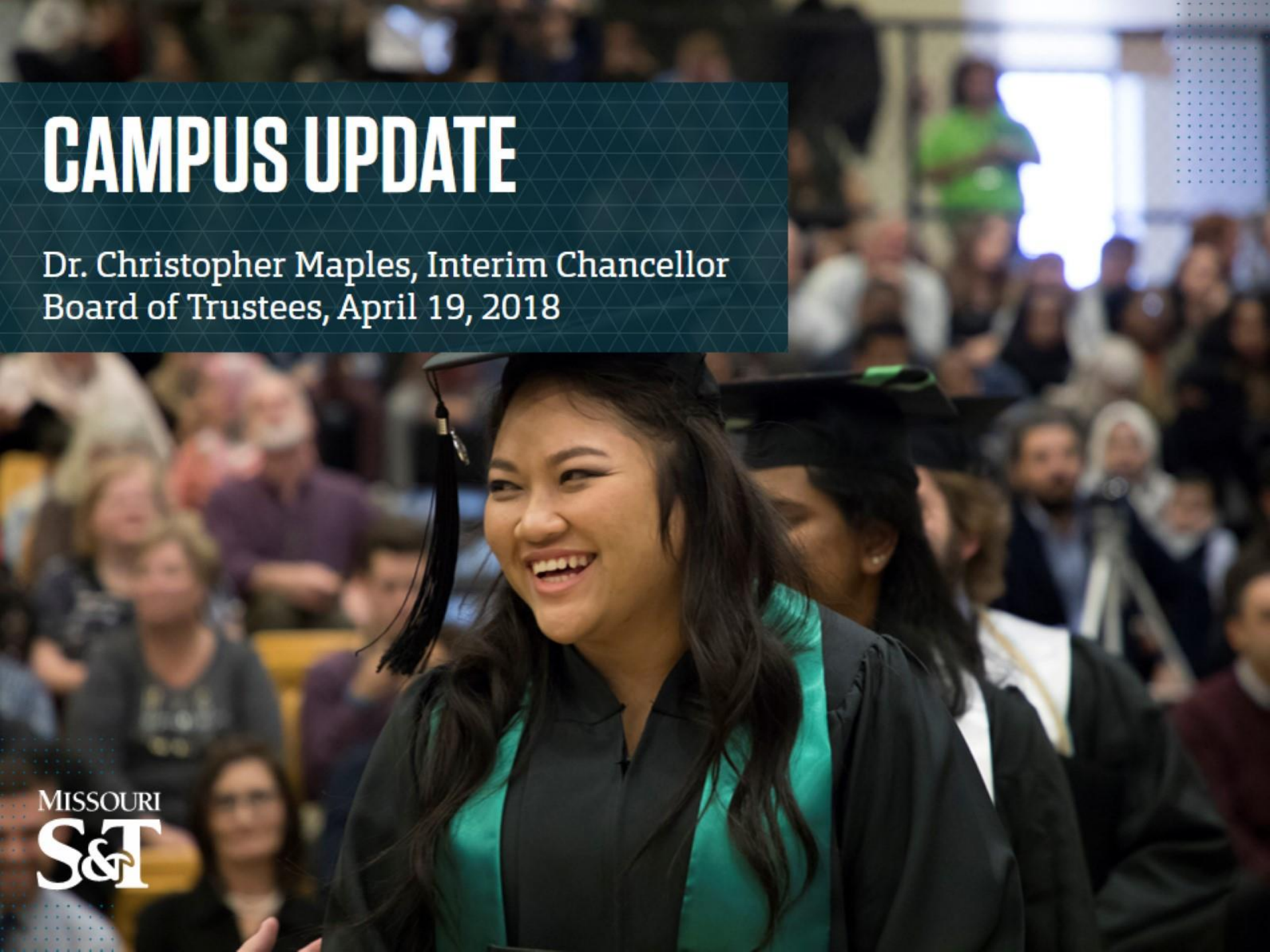


CAMPUS UPDATE

Dr. Christopher Maples, Interim Chancellor
Board of Trustees, April 19, 2018

MISSOURI
S&T



FALL 2017 BY THE NUMBERS

8,884 students: 6,920 undergrads and 1,964 grads

70% Missourians

18% out-of-state

11% international

77% men

23% women

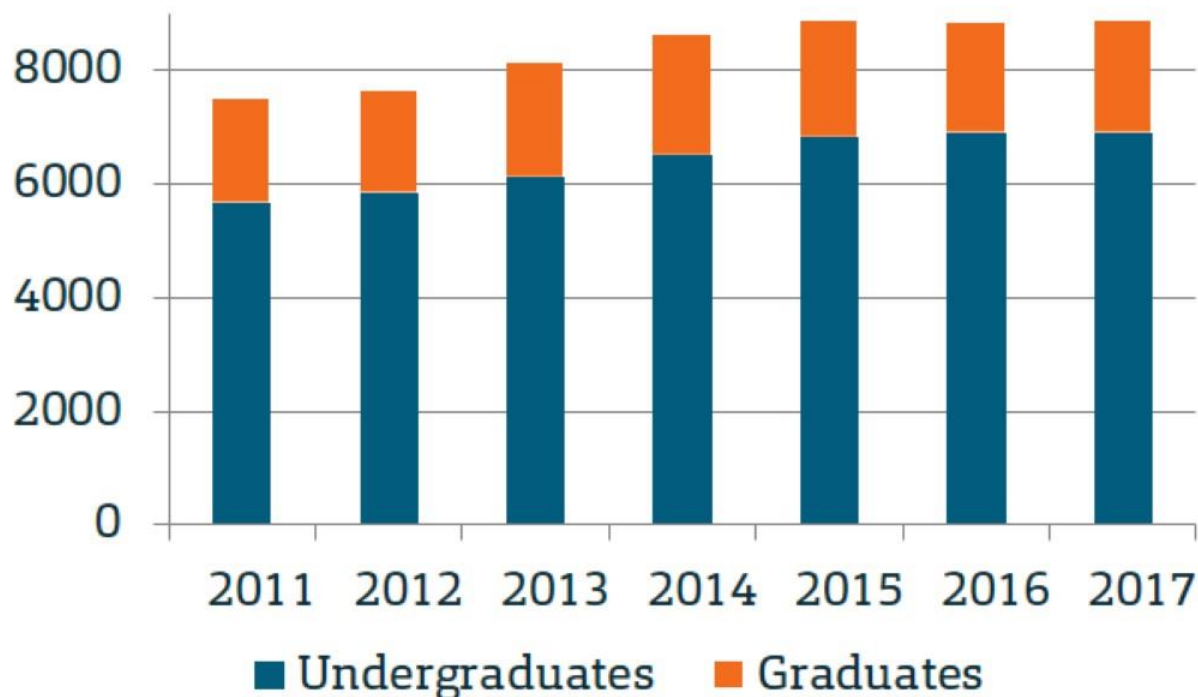
73% white

13% minority

11% international

2% not specified

Steady Enrollment

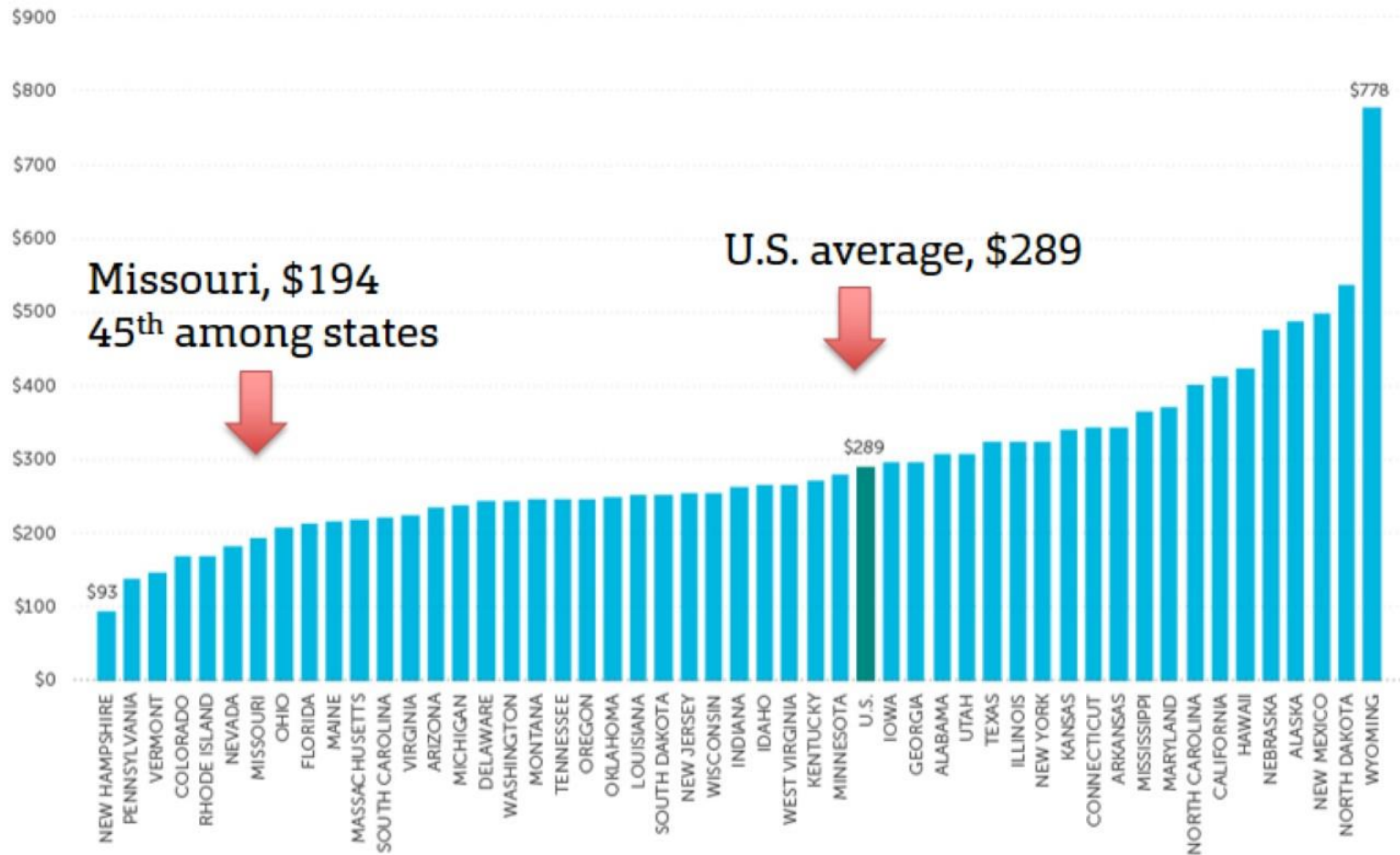


Totals may not equal 100% due to rounding.

THE STATE OF U.S. HIGHER EDUCATION

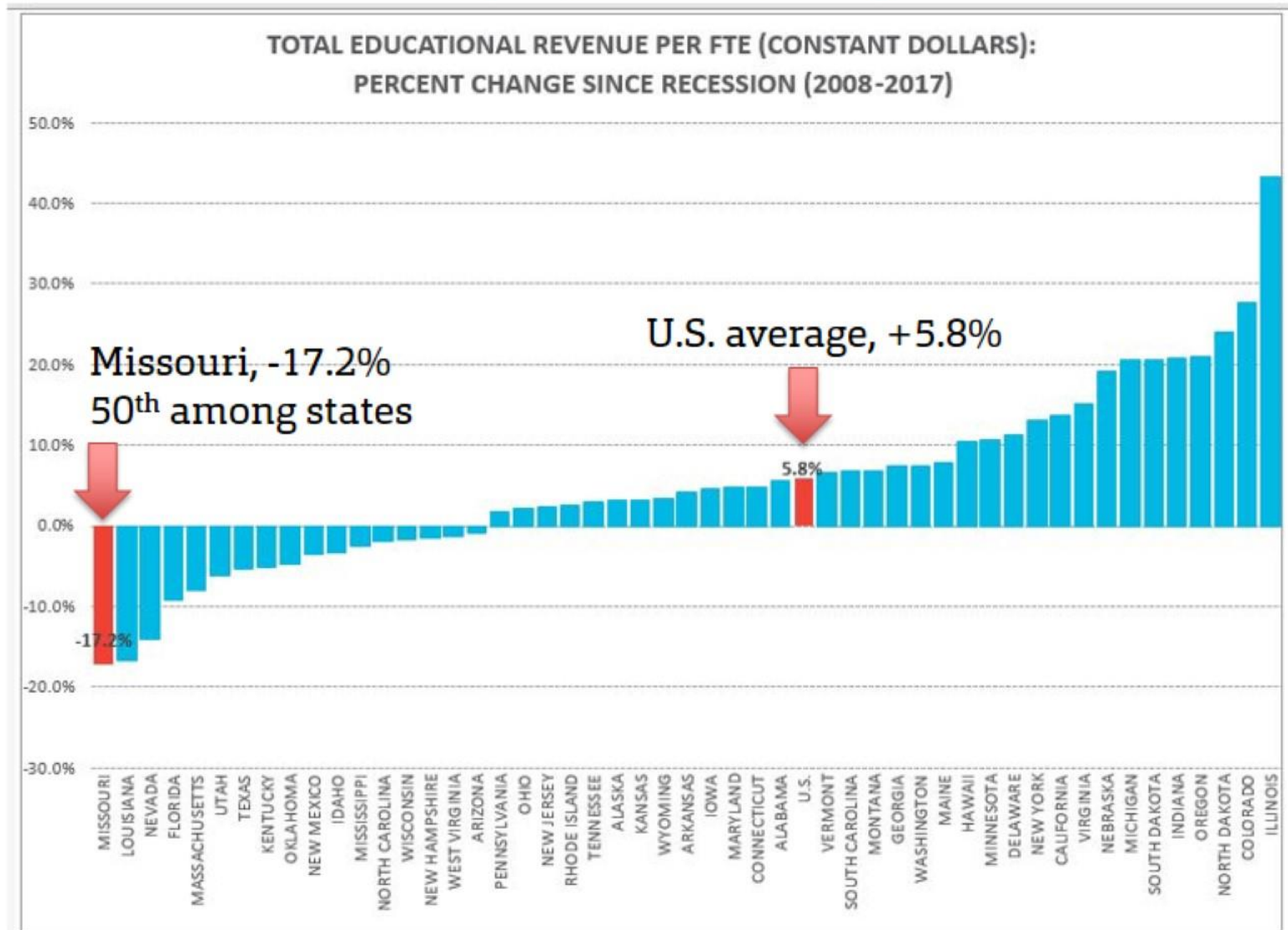
State Higher Education Executive Officers Association (SHEEO)
Fiscal Year 2017 Finance Report, www.sheeo.org

HIGHER EDUCATION SUPPORT PER CAPITA BY STATE, FY 2016



THE STATE OF U.S. HIGHER EDUCATION

State Higher Education Executive Officers Association (SHEEO)
Fiscal Year 2017 Finance Report, www.sheeo.org

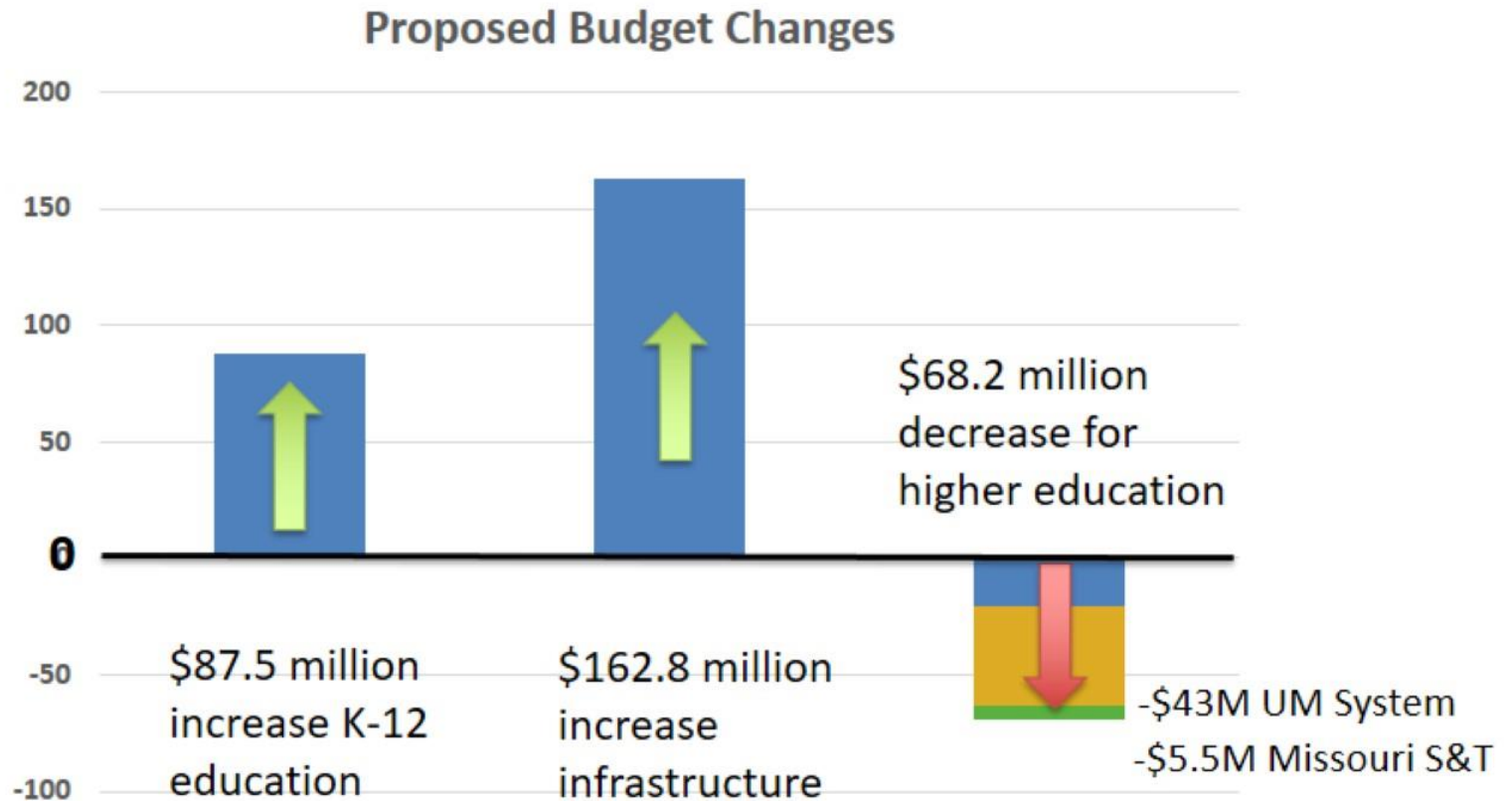


UM SYSTEM INITIATIVES

- Missouri Compact for Education, Research, Engagement and Economic Development
 - Strategic plan for UM System
 - May 18: S&T will submit final draft to UM System and Board of Curators for review
 - June 21: Campus strategic plans will be reviewed and approved by the Board of Curators
- Activity Analysis Survey
 - All non-faculty positions, Feb. 19-March 2, 2018
- Affordable and Open Educational Resources (A&OER)
 - Initiative to lower the costs of textbooks and educational materials for students



GOVERNOR'S BUDGET PROPOSAL



- 7.7% cut to public higher education (\$68.2M)
 - Does not include 3% reserve (released only once in last 30 years)
- Additional 10% of core funding tied to performance measures
- Last year: ~10% reduction in core state funding
- Does not include line items

LEGISLATIVE ISSUES

- Higher education funding
 - Missouri S&T is preparing for a \$5M budget reduction for FY2019
- Tuition
 - Senate Bill 912 seeks to change the cap on tuition at public colleges
- “Swim lanes”
 - Senate Bills 807 and 577 seek to modify degree offering provisions
 - Allow for community colleges to grant bachelor’s degrees if authorized by CBHE
 - University of Missouri System campuses only state institutions authorized to offer Ph.D. or first-professional degrees (medicine, law, etc.)



BUILDING FOR THE FUTURE



Advanced Construction and Materials Laboratory (ACML)

- Will add 16,000 square feet of research space
- Addition to High-bay Structures Laboratory in Butler-Carlton Civil Engineering Hall
- \$6.5 million raised for project



Student Fitness Center

- Will add 10,000+ square feet, more than double number of fitness machines
- \$4 million expansion project
- Funded by student fees
- Voted on by students
- Broke ground April 12, 2018

THANK YOU!



MISSOURI
S&T